



The Lock Building, Whitworth Street West, Manchester

£950 PCM

Welcome to The Lock Building; an uber-popular development situated in the heart of Manchester city centre.

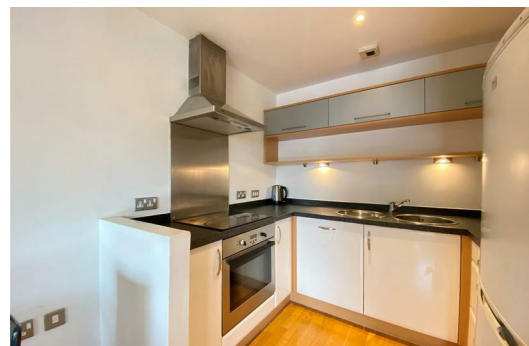
Step inside and you'll find a bright and spacious fully-furnished one bedroom apartment. The centrepiece of this apartment is the large open-plan lounge/kitchen, which leads out onto your very own balcony, so you can enjoy the breeze and buzz of the city. The bedroom is generously sized, so you'll have more than enough room to spread out. With underfloor heating, high ceilings, timber flooring and a quality finish throughout, what more could you want?

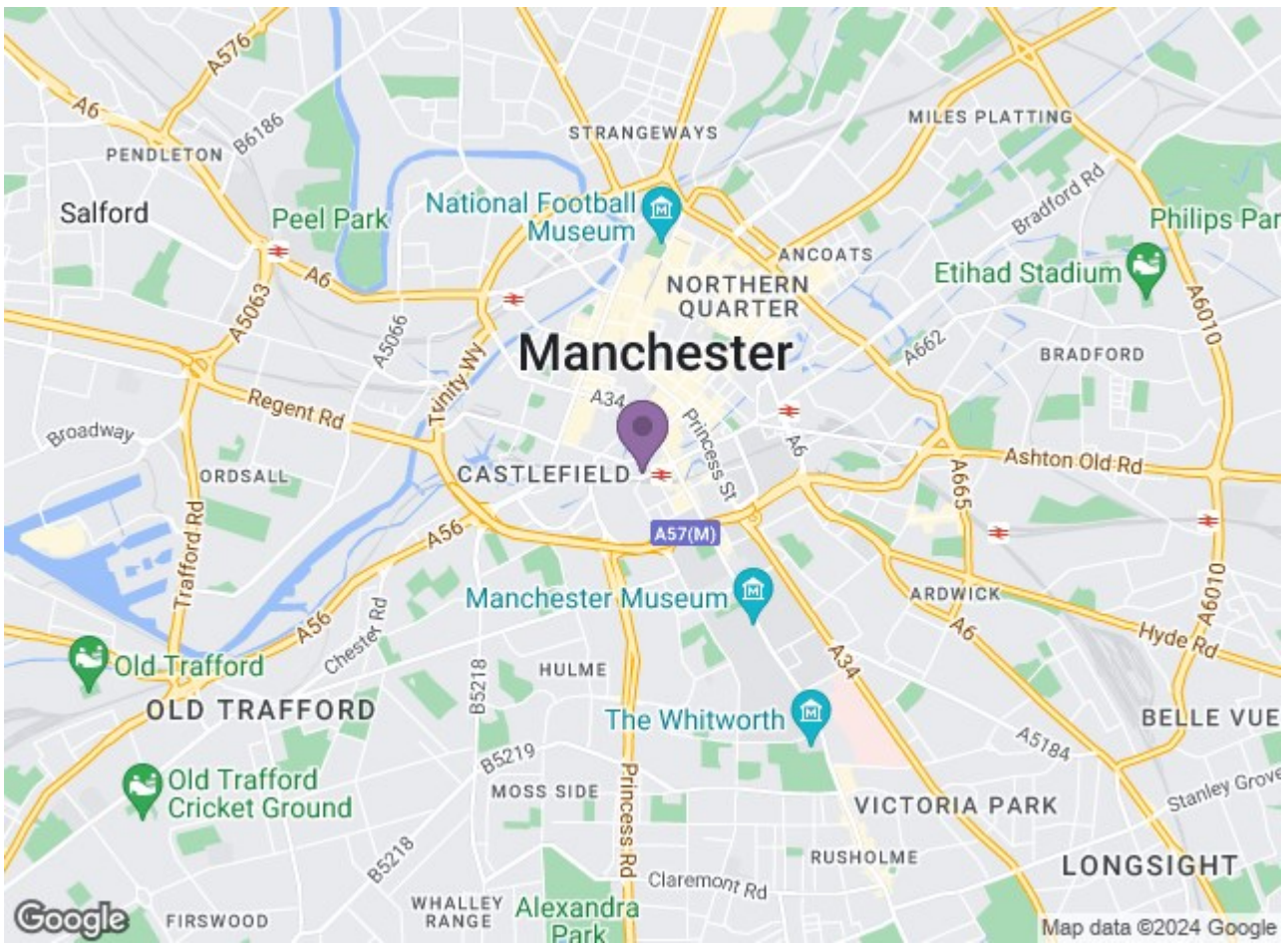
Located just minutes from the city centre and both Deansgate and Oxford Road train station, you really are in the perfect spot. So you'll have easy access to everything Manchester has to offer!

This property is a definite must-see and as an added bonus, tenants will also benefit from a 24-hour concierge and a video entry system.

If you're interested in having a closer look, or have any questions, do get in touch. And just so you know, the pictures for this apartment are for marketing purposes only, so the internal fixtures, fittings and furnishings may vary.

****Please note that this development is due to undergo remedial works to remove and replace combustible insulation. This may restrict usage of the balcony at a later stage of the tenancy.**





Energy Efficiency Rating		Current	Potential
A	92-100		
B	81-91		
C	69-80		
D	55-68		
E	39-54		
F	22-38		
G	1-21		
England & Wales		76	88

Environmental Impact (CO ₂) Rating		Current	Potential
A	10-20 g/kWh		
B	21-35 g/kWh		
C	36-50 g/kWh		
D	51-65 g/kWh		
E	66-80 g/kWh		
F	81-95 g/kWh		
G	96-120 g/kWh		
England & Wales		68	78

Ascend
Built on higher standards